

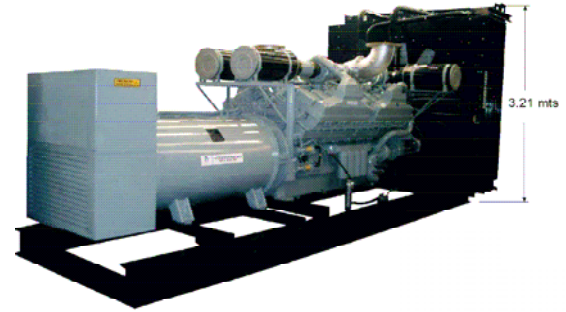


ottomotores
DALE ELECTRIC

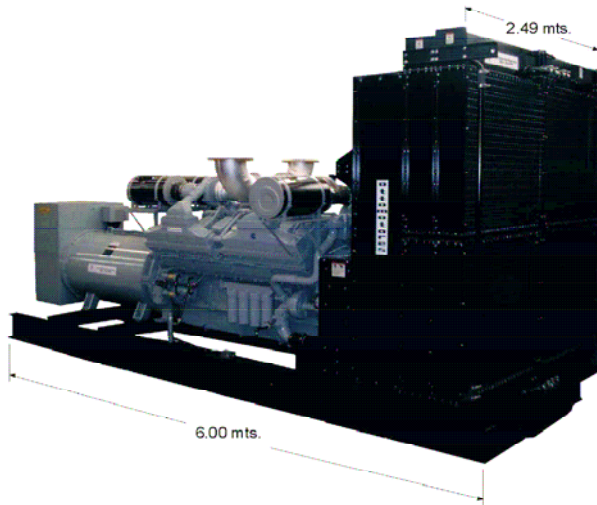
Model CNY2000PT



Rating:	2000 kW Standby at 60 Hz
Make:	Cummins
Type:	4 Cycle.
Engine Model:	QSK60G6
Gross Engine Power Output:	2922 BHP a 1800 rpm.
Cylinder:	16 in "V"
Bore X Stroke:	159 x 190 mm.
Displacement:	60.2 Lts.
Piston Speed:	11.4 m / Seg.
Compression Ratio:	14.5 : 1
Fuel Consumption:	521.0 Lts./Hrs.
Aspiration:	Turbocharged And Aftercooled
Electrical System:	24 volts.
Oil Total System Capacity:	280.0 Lts.
Electric Governor:	Electronic
Water Preheater:	[2x] 2000 Watts.



PTOM2000C



Weight: (kgs) : 14600 kgs

Dimensions (cm) : L 600 x W 250 x H 325 cm

Control System: Set Mounted Dale 3100 Autostart Control Panel.

Engine: All heavy Duty, water cooled Diesel Engine, include starter and battery charging alternator; high ambient set mounted radiator cooling system.

Alternator: Brushless design, screen protected, fan ventilated, drip proof in accordance with IP 21. Insulation class H, radio interference suppression, voltage regulation is maintained within +/- 1% from no load to full load at any power factor between 0.8 lagging and unity, inclusive of a speed variation of upto 4%.

Electrical System: 24 Volt system with battery charging alternator.

Documentation: A full set of operation and maintenance manuals.

Factory Test: The generator set is load tested before dispatch.

All specifications and Materials are subject to change without prior notice.



Authorized Distributor:

Partech Industries, Inc.

5773 NW 151 Street
Miami Lakes, FL 33014 USA

Tel 305-751-0160

Fax 305-757-9809

E-MAIL: sales@partech.us

www.partech.us